

TORQUE STRENGTH RATING OF 5,500 FT-LB [7,500 Nm]  
ULTIMATE COMPRESSION CAPACITY - 55 KIPS [245,000 N] WITH A  
TORQUE FACTOR (Kt)=10  
ULTIMATE TENSION STRENGTH - 60 KIPS [267,000 N] WITH COUPLING BOLT

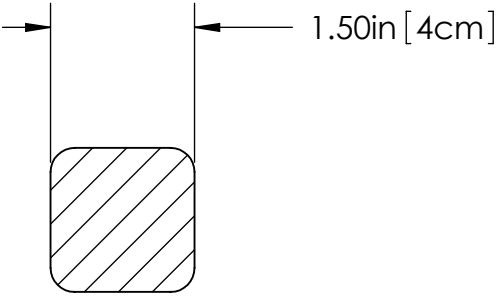
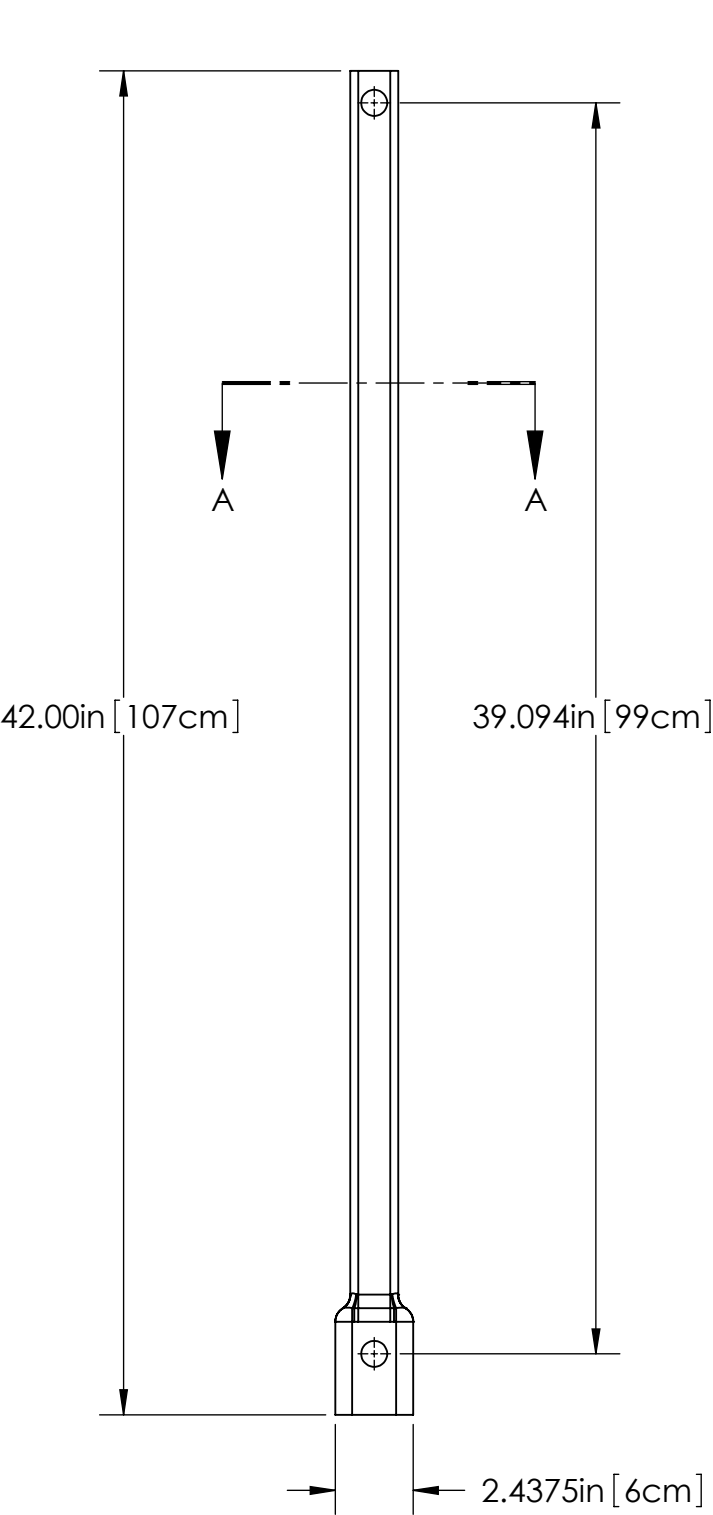
- NOTES:
1. FINISH - HOT DIP GALV. PER ASTM A123 OR BLACK BY ADDING SUFFIX "U" AFTER CAT. NO.
  2. SHAFT MATERIAL - ROUND CORNERED SQUARE (RCS) STEEL BARS PER ASTM A29 AND ASTM A576 GRADE 10V45M, WITH MILL CERT. AT 70 KSI [483,000 kN/m] MIN. YIELD STRENGTH.
  3. COUPLING BOLTS: 3/4" DIAMETER X 3" LONG HEX HEAD PER ASTM A325 AND 3/4" HEX JAM NUTS PER ASTM A563.
  4. ALL WELDING TO BE BY WELDERS CERTIFIED PER AWS CODE D1.1
  5. SEE TEST REPORT FOR ALLOWABLE AXIAL AND LATERAL LOAD PER ICC-ES ACCEPTANCE CRITERIA, AC358 BY AN ACCREDITED IAS 17025 TESTING LABORATORY.
  6. ALL MATERIAL IS MANUFACTURED AS PER ICC-ES, AC10 ACCEPTANCE CRITERIA FOR QUALITY CONTROL DOCUMENTS.

D

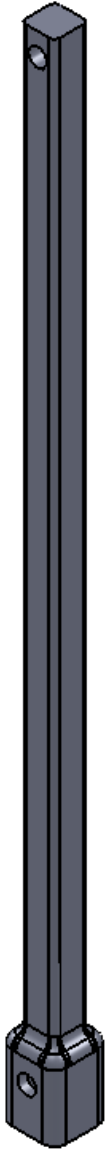
C

B

A



SECTION A-A  
SCALE 1 : 2



D

C

B

A



All information contained in this disclosure whether patentable or otherwise comprises proprietary information of MacLean Dixie, LLC. and its unauthorized use or publication without the express written consent of MacLean Dixie, LLC. is strictly prohibited

DRAWING NUMBER:			D6E42
SHEET NAME:		SHEET 1	1 OF 1
PRODUCT DESCRIPTION:			
D6 1-1/2" RCS EXTENSION			
DRAWN BY:		CRL	DATE: 7/27/11